

Abstracted from 'The American Dowser', Volume 23, No.1 - February 1983  
by Barbara Prisbe, a Director of CSQ, and Editor of 'The American Dowser'

### BRAIN PATTERNS CHARACTERISTIC OF DOWSERS

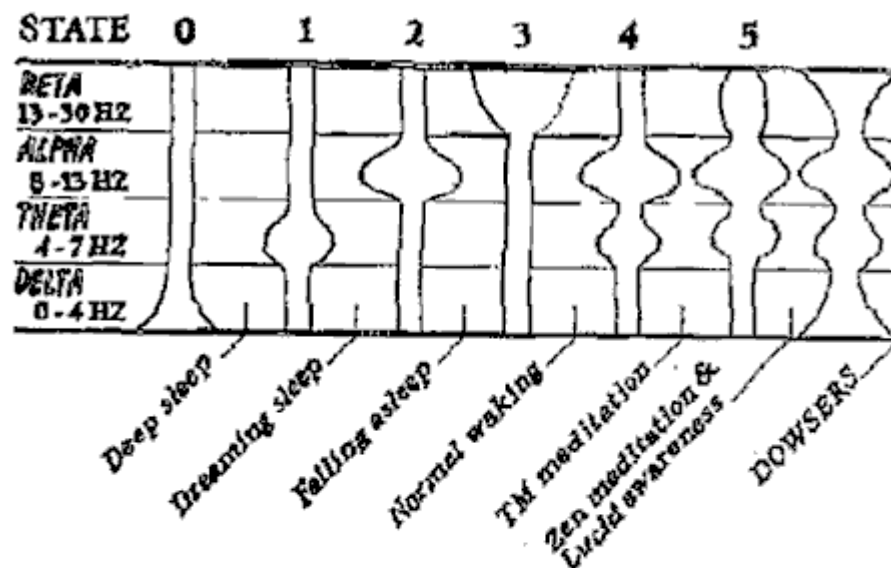
As Measured on the Mind Mirror, by Edith M. Jurka, M.D.

Diplomate of the American Board of Psychiatry and Neurology

The Mind Mirror is an instrument designed in London by Dr. C. Maxwell Cade F.I.E.E., F.I.Physics, F.I.Bio., awarded the Oliver Lodge Research Grant of the College of Psychic Studies, and Geoffrey Blundell, electronics designer.

The Mind Mirror consists of two electroencephalographs which record both sides of the brain instantaneously. The brain frequency analysis consists of 14 different frequency ranges, from 0.75 Hz to 38 Hz.

Five original patterns were established. When checking Dowsers it was found that a sixth and different pattern emerged... see diagrams below; which show the left and right brain wave patterns for various states in normal people, and those observed in meditative people and in experienced Dowsers.



Concerning the very high delta amplitude in all the Dowsers. Dr. Cade said it correlates with higher levels of consciousness and a reaching out to the unknown. Certainly this is the essence of what a Dowser does - reach out for information not available to the 5 ordinary senses. A confirmation of this interpretation is that the delta frequencies are absent in the 5th State pattern of yogis, whose practice does not include a search.